

The SAMPLE Registry:
Serial Alzheimer's and
MCI Prospective
Longitudinal Evaluation

 **The SAMPLE Registry - Objectives**

Collect serial cognition, blood and CSF samples from AD and MCI subjects aged \geq 50 years

Provide +ve control samples for PrecisionMed collections in other neurodegenerative and neuropsychiatric diseases

Track the rate of cognitive deterioration in each subject over time/Identify meaningful changes in cognition

Facilitate matching of clinical change with change in biology (biomarker development), Other uses

 The SAMPLE Registry – Clinical Protocol – AD Diagnostic Criteria

NINCDS-ADRDA criteria (McKhann et al., 1984)

MMSE 14-26

Deficit in 2 or more areas of cognition

Progressive worsening of memory

Onset between 40 and 90 years (usually >65)

No disturbance of consciousness

CT or MRI consistent with AD

Other systemic or cerebral disease excluded

Consent

AD or MCI

≥ 50 y/o

6 Monthly
Visits

Blood/CSF

Clinical/
Ratings

 The SAMPLE Registry – Outputs

Biological

- CSF
- PAXGene
- Serum
- Plasma
- DNA

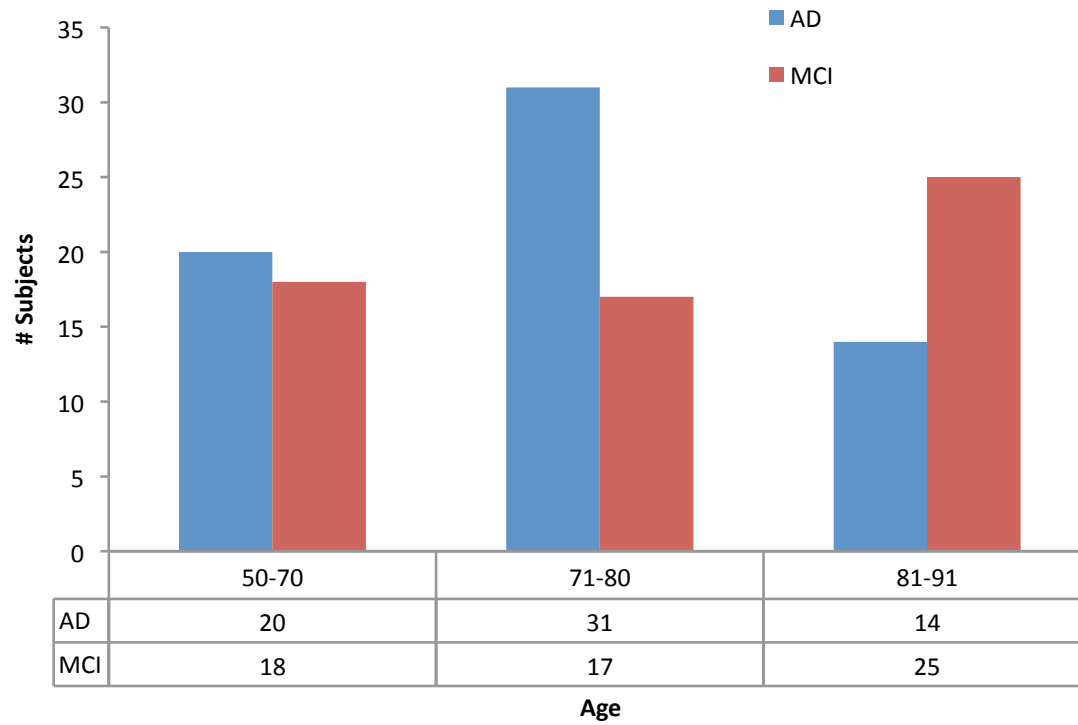
Psychometric

- MMSE
- ADAS-Cog
- CDRs
- Wechsler
Memory
Scale

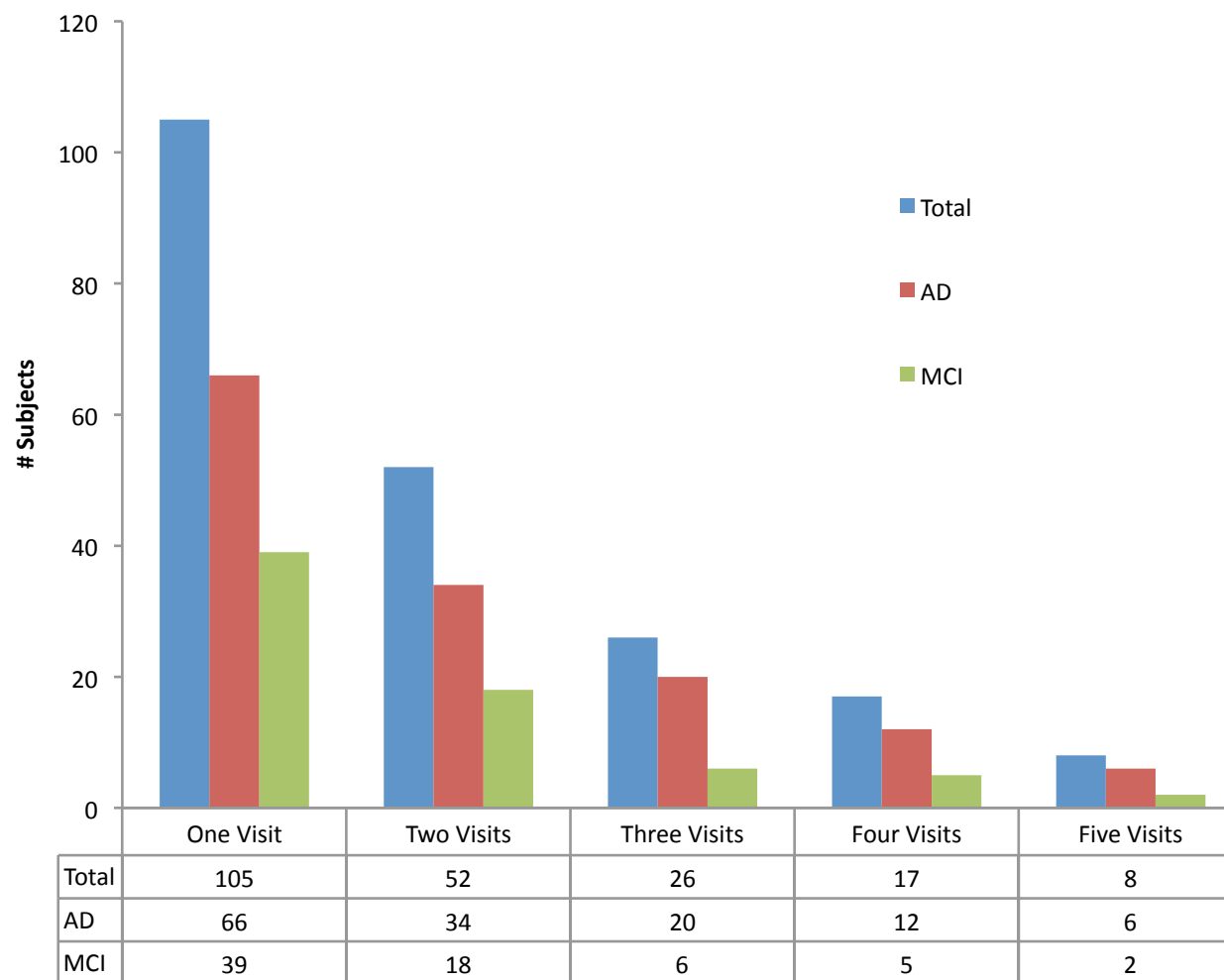
Demographic

- Family Hist.
- Meds.
- Education
- Smoking
- Alcohol
- Clinical
Events

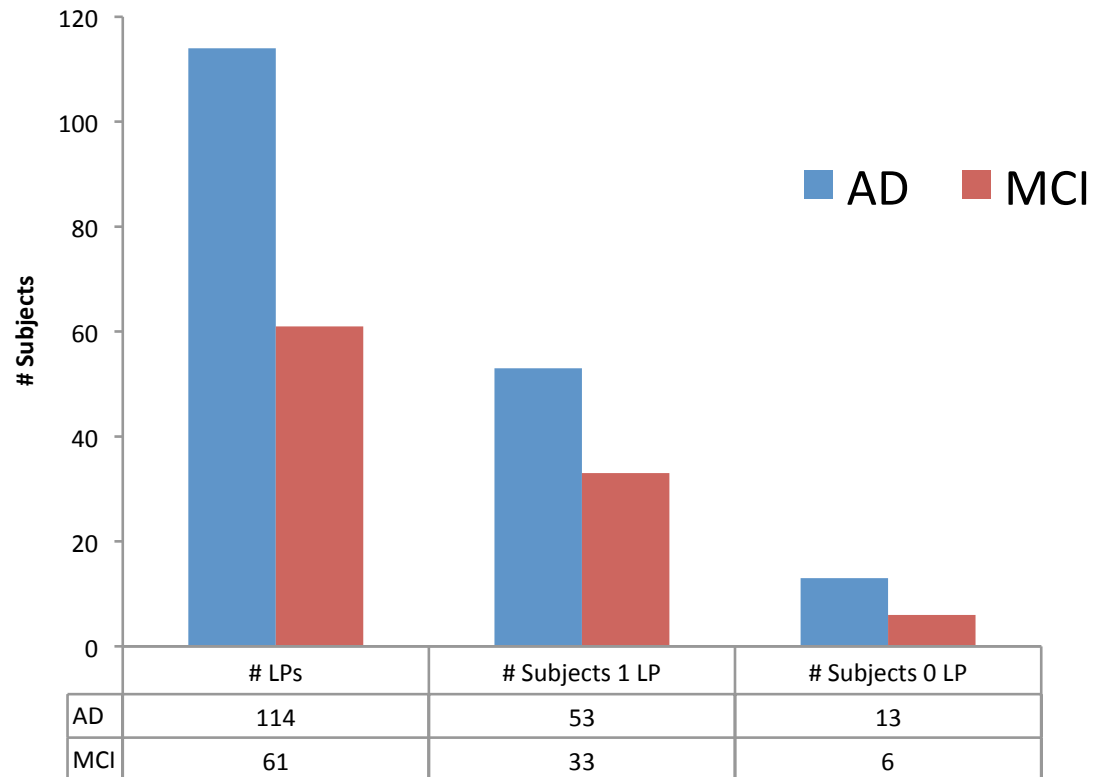
The SAMPLE Registry – AGE at Baseline



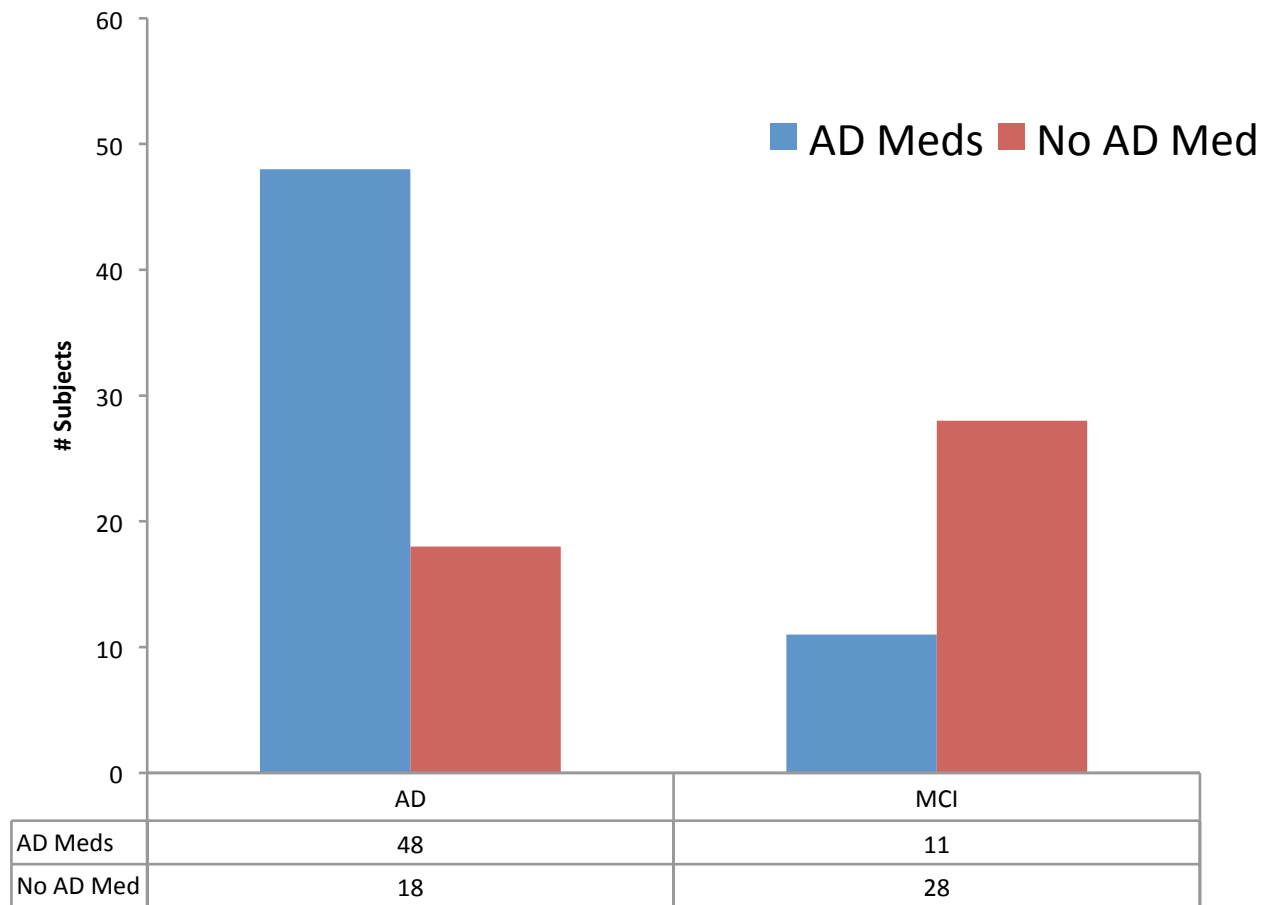
 The SAMPLE Registry – # Subjects/Visits



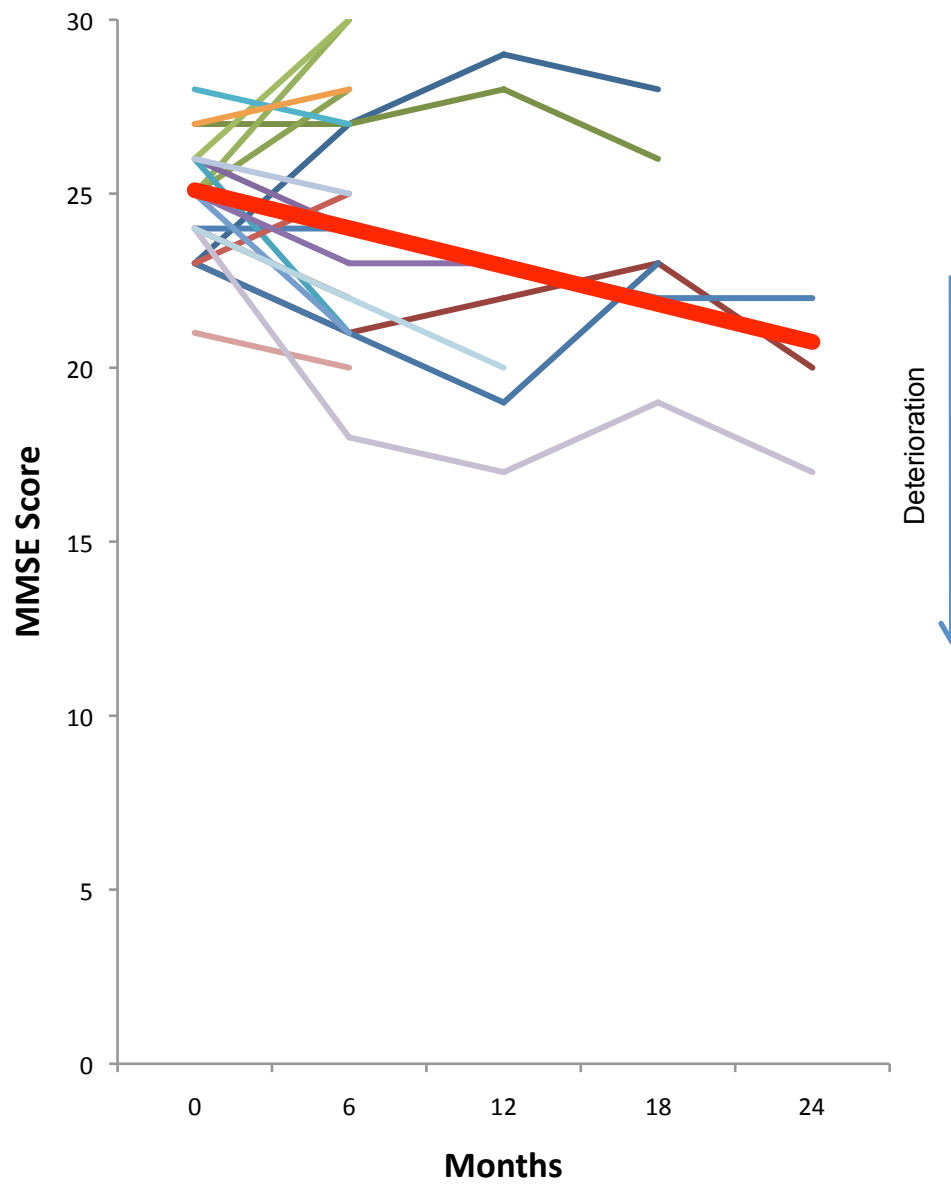
The SAMPLE Registry – Successful Lumbar Puncture



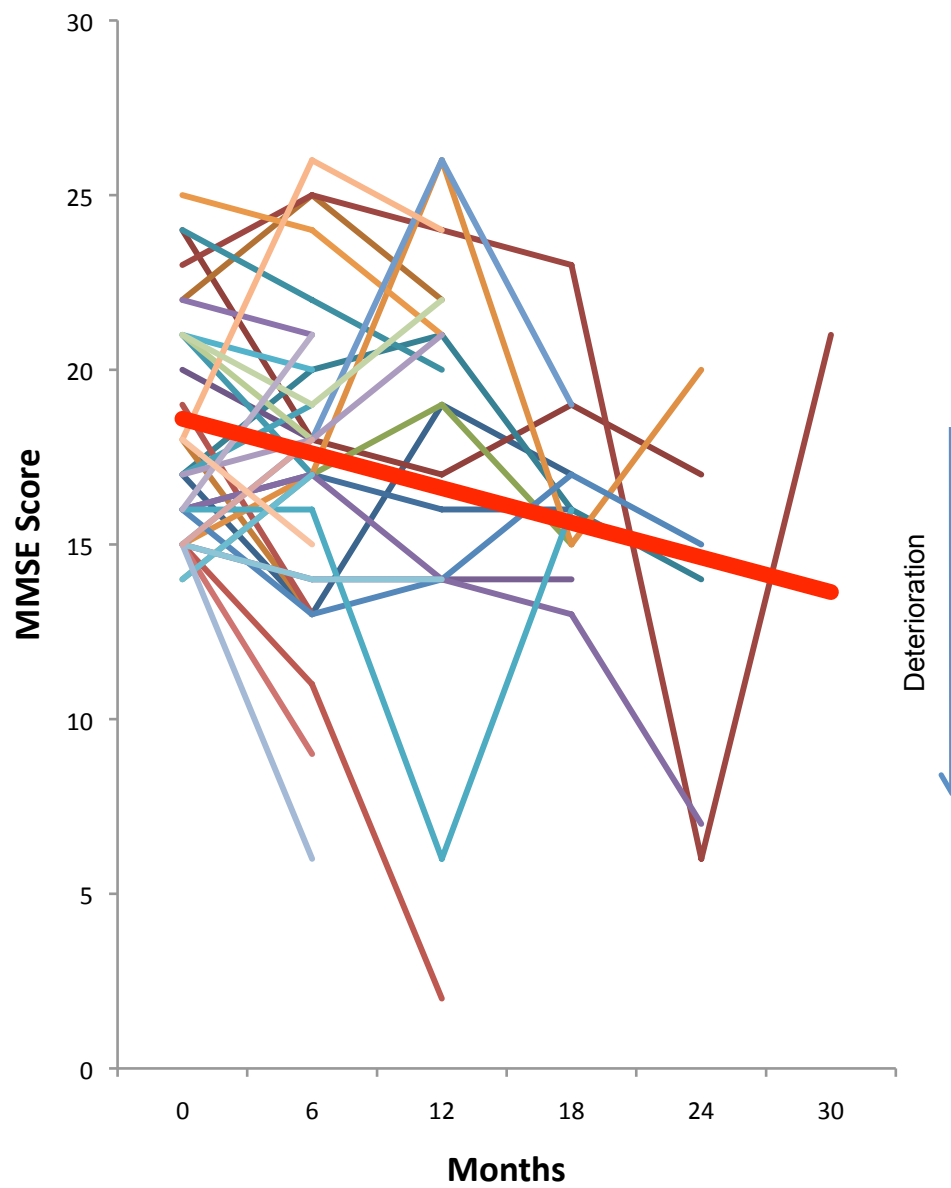
 The SAMPLE Registry – # Subjects on AD Medications



 The SAMPLE Registry – Serial MMSE – Individual MCI Subjects



 The SAMPLE Registry – Serial MMSE – Individual AD Subjects



 The SAMPLE/ACE Registry – CSF A β 1-42 – 20 AD/20 Normal

